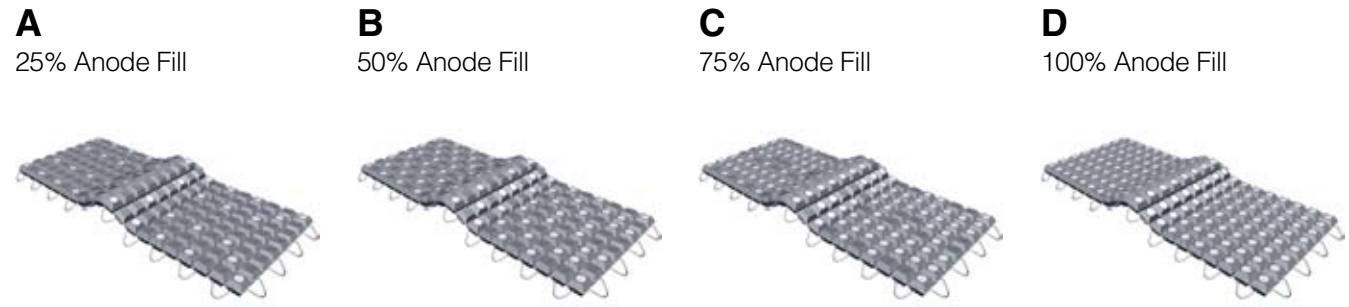


### Sample Design Guide



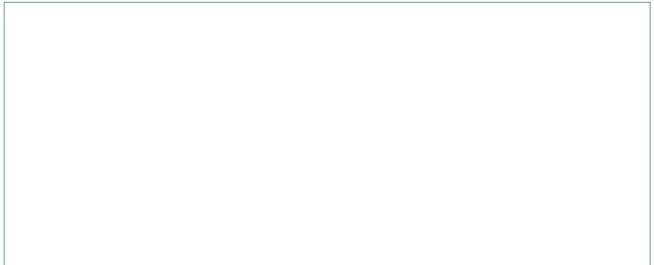
Sample Mat Type	A	B	C	D
Spacing (ft) in seawater	12425	16093	17416	18144
Spacing (ft) in buried	9691	12505	13370	13841
Anode life (yrs) in seawater	15	19	24	30
Anode life (yrs) buried	21	30	40	51
Amps delivered in seawater	3.2	4.9	5.8	6.4
Amps delivered buried	2.2	3.2	3.5	3.8

Design based on 12.75 in OD pipeline. Pipeline not buried (5mA / sq ft). 2.5% bare (coating).

### Contact Details

**Deepwater Corrosion Services Inc.**  
 10851 Train Court, Houston, TX 77041  
**Telephone** +1 713 983 7117  
**Fax** +1 713 983 8858  
**Email** [sales@stoprust.com](mailto:sales@stoprust.com)  
**www.stoprust.com**

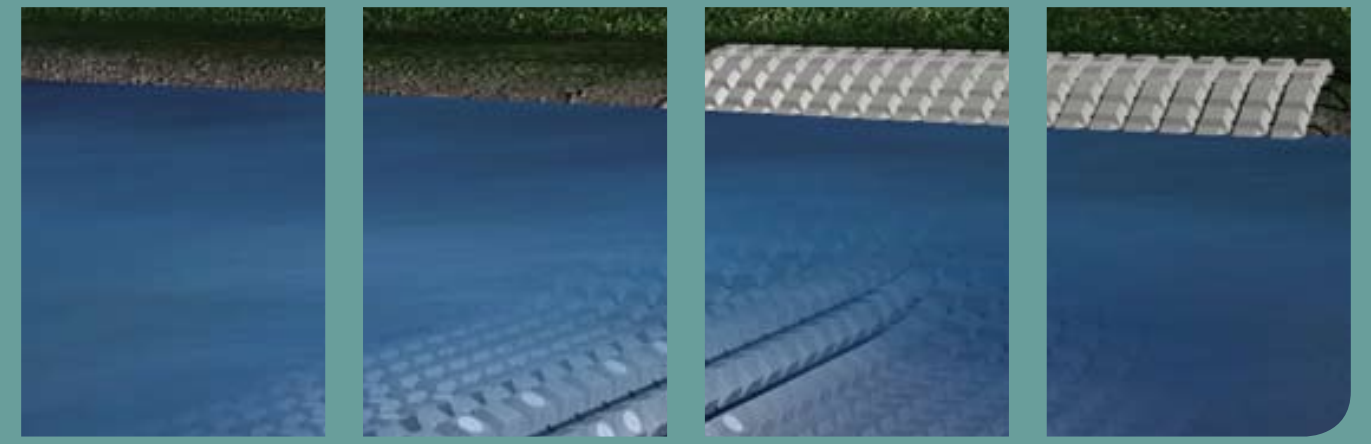
### Local Exclusive Distributor



### Deepwater Corrosion Services Inc.

Provide pipeline protection with the CP Mat™

# CP MAT



# DEEPWATER

[www.stoprust.com](http://www.stoprust.com)

## CP Mat™ Overview

CP Mat combines the proven technology of a segmented concrete stabilization mattress with an integrated cathodic protection system. Placement of a CP-Mat provides the required stabilization and the added benefit of up to 30 years of cathodic protection for up to 2 miles of pipeline in each direction.

Tieback to the pipeline can be made with diver or ROV using the field proven RetroClamp™ system. There is no need to remove a pipeline's concrete weight coating.

Mats are provided with patented non-shielding soft pads on the underside and can be loaded with aluminum or zinc anodes, making them suitable for all water chemistry (from seawater to river water).



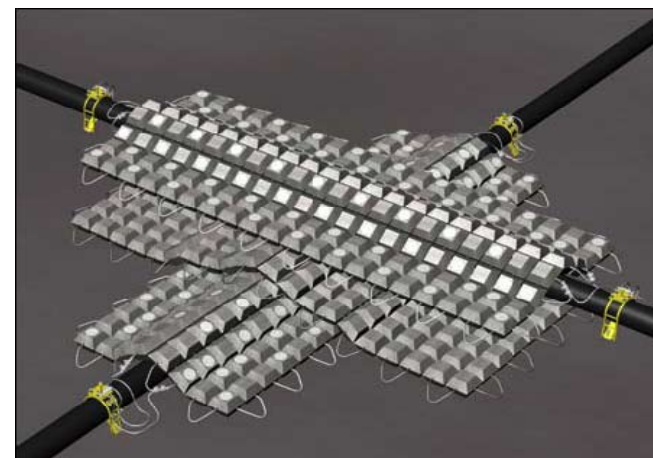
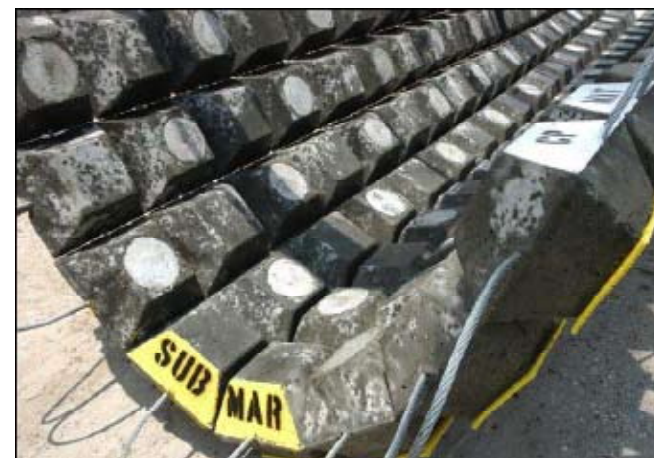
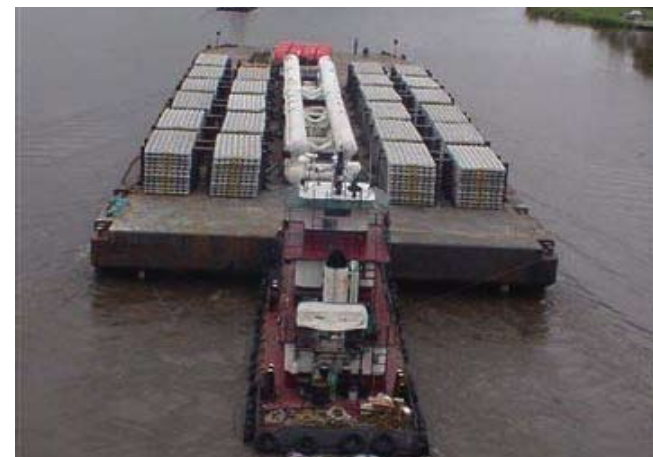
## Applications

### Pipeline Crossings

The CP Mat is ideal for pipeline crossings; in conjunction with standard concrete mattresses, the CP Mat can provide extra CP for the pipeline being crossed, as well as for the new pipeline. The CP provided can add a "free" CP retrofit of up to 20 years, with minimal additional installation time required.

### Pipeline River Crossings

In the case of a river crossing, installing one or more CP Mats can provide additional CP for the pipeline section underwater, where coatings tend to be damaged and pipelines are often underprotected. The additional CP Mats also provide the same added stability to the pipeline as the standard concrete mattress.

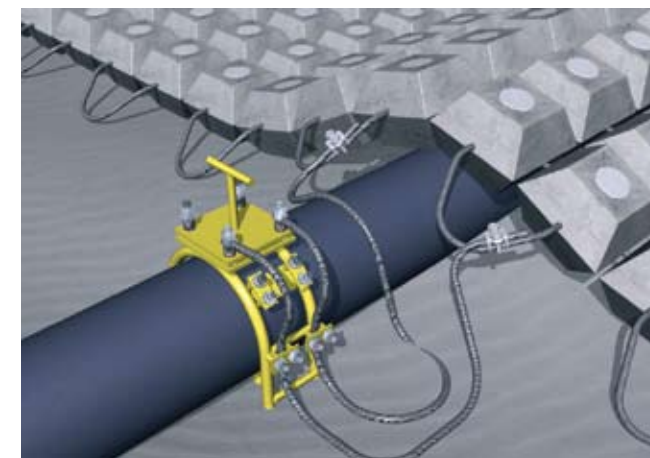
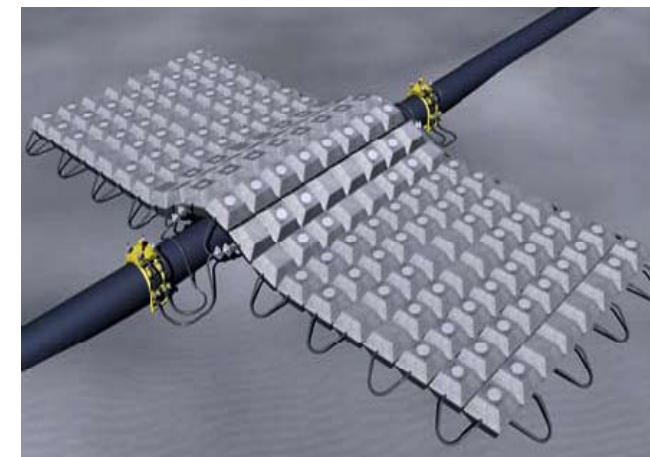


## Applications

### Pipeline CP Retrofits

The CP Mat is an excellent solution for the retrofit of an aging or damaged pipeline. If a pipeline or its coating has been damaged, placing the Mat directly over the damaged area or holiday directs cathodic protection specifically to the required area. When retrofitting older pipelines installed without a concrete weight coat, the CP Mat provides ballast to stabilize pipeline movement. Smaller diameter flowlines and shortrun pipelines can also benefit from the ballast provided with a CP Mat. The stability of the mattress also makes installation feasible in all types of harsh environments, where strong currents are a concern.

The tieback to the pipeline can be made via ROV or Diver, thanks to Deepwater's RetroClamp system. For more information on RetroClamp, visit [www.stoprust.com](http://www.stoprust.com).



## Applications

### Sheet Pile Bulkheads

The CP Mat will work anywhere that a steel or reinforced concrete structure has to be stabilized in a submerged situation. The integral anodes of the Mat can provide significant supplemental CP to a sheet pile bulkhead. As the sea-side of the bulkhead typically experiences more extensive corrosion than the shore-side, it is beneficial to direct extra CP to this side. The mattress also provides superior low profile CP to prevent underprotection and scour in shallow water.

### Wind Farm Retrofits

The CP Mat is also a solution for retrofitting offshore wind turbines, where shallow water and scour have proven to be difficult for traditional CP solutions. The low-profile mattress works well in this environment, and the added ballast proves adequate for preventing scour.

